



Comparative Performance Analysis Report

Foundation of the Episcopal Diocese of East Carolina
2Q 2022

PREPARED FOR:

PAUL ELAM

RAYMOND JAMES

TRANSACTION RECORDS AND PORTFOLIO VALUATIONS HAVE BEEN OBTAINED FROM THIRD-PARTY SOURCES. THOUGH EVERY EFFORT HAS BEEN MADE TO ENSURE CORRECTNESS, RAYMOND JAMES CANNOT GUARANTEE THE ACCURACY OR COMPLETENESS OF THE REPORTS.

PLEASE NOTE:

AVAILABLE TO YOU UPON WRITTEN REQUEST, AT NO COST, IS AN INVESTMENT ADVISORY DISCLOSURE DOCUMENT (RAYMOND JAMES' FORM ADV, PART 2A).
IF YOU WOULD LIKE A COPY, PLEASE CONTACT YOUR RAYMOND JAMES REPRESENTATIVE.

Market Performance

As of June 30, 2022

Name	Q2-22	YTD	1 Yr	2 Yrs	3 Yrs	4 Yrs	5 Yrs	7 Yrs	10 Yrs
US Equity									
Russell 3000 Index	-16.70	-21.10	-13.87	11.43	9.77	9.58	10.60	10.43	12.57
S&P 500 Index	-16.10	-19.96	-10.62	12.18	10.60	10.55	11.31	11.14	12.96
S&P 500 Equal Weighted	-14.36	-16.68	-9.38	16.86	9.73	9.34	9.87	9.83	12.66
Russell 1000 Index	-16.67	-20.94	-13.04	11.54	10.17	10.13	11.00	10.78	12.82
Russell 1000 Growth Index	-20.92	-28.07	-18.77	7.59	12.58	12.33	14.29	13.45	14.80
Russell 1000 Value Index	-12.21	-12.86	-6.82	15.71	6.87	7.26	7.17	7.69	10.50
Russell 2500 Index	-16.98	-21.81	-21.00	11.65	5.91	4.86	7.04	7.16	10.49
Russell Midcap Index	-16.85	-21.57	-17.30	11.31	6.59	6.90	7.96	8.04	11.29
Russell 2000 Index	-17.20	-23.43	-25.20	10.09	4.21	2.28	5.17	5.91	9.35
Russell 2000 Growth Index	-19.25	-29.45	-33.43	0.38	1.40	0.93	4.80	4.96	9.30
Russell 2000 Value Index	-15.28	-17.31	-16.28	20.44	6.18	2.93	4.89	6.40	9.05
International Equity									
MSCI AC World Index (Net)	-15.66	-20.18	-15.75	8.32	6.21	6.09	7.00	6.98	8.76
MSCI World ex U.S. (Net)	-14.66	-18.76	-16.76	5.46	1.70	1.60	2.66	2.98	5.37
MSCI EAFE (Net)	-14.51	-19.57	-17.77	4.32	1.07	1.07	2.20	2.70	5.40
MSCI Emerging Markets (Net)	-11.45	-17.63	-25.28	2.60	0.57	0.73	2.18	2.79	3.06
Fixed Income									
90 Day U.S. Treasury Bill	0.11	0.15	0.17	0.13	0.63	1.05	1.11	0.87	0.63
Blmbg. U.S. Aggregate	-4.69	-10.35	-10.29	-5.45	-0.94	1.20	0.88	1.42	1.54
Blmbg. U.S. Gov't/Credit	-5.03	-11.05	-10.85	-5.77	-0.77	1.47	1.05	1.63	1.67
Bloomberg U.S. Municipal Bond Index	-2.94	-8.98	-8.57	-2.41	-0.18	1.50	1.51	2.08	2.38
Blmbg. U.S. Corp: High Yield Index	-9.83	-14.19	-12.81	0.29	0.21	1.98	2.10	3.48	4.47
FTSE World Government Bond Index	-8.91	-14.79	-16.77	-8.42	-4.27	-1.92	-1.17	0.08	-0.69
FTSE Non-U.S. World Government Bond	-12.50	-18.74	-21.92	-10.29	-6.72	-4.02	-2.62	-0.77	-1.71
Real Estate									
FTSE NAREIT All REITs Index	-14.83	-19.31	-6.87	11.81	4.64	6.59	6.22	7.71	8.09
Alternatives									
HFRI Fund of Funds Composite Index	-4.08	-6.73	-5.65	5.65	3.88	3.19	3.59	2.66	3.73
Bloomberg Commodity Index Total Return	-5.66	18.44	24.27	34.51	14.34	8.66	8.39	2.79	-0.82
Inflation									
CPI - All Urban Consumers (Unadjusted)	3.06	6.28	9.06	7.21	4.98	4.13	3.88	3.14	2.59

Total Composite

Total Composite Performance

As of June 30, 2022

	Market Value \$	% of Portfolio	3 Mo (%)	YTD (%)	1 Yr (%)	3 Yrs (%)	5 Yrs (%)	10 Yrs (%)	Inception (%)	Inception Date
Total Composite	16,371,500	100.00	-10.82	-14.51	-11.70	5.36	5.06	6.45	4.78	Feb-06
IPS Allocation¹			-10.59	-15.06	-12.26	4.04	4.91	5.98	4.85	
CPI+5%			4.33	8.90	14.51	10.22	9.07	7.72	7.60	
Louis W. Alston Fund	2,452,502	14.98	-10.85	-14.41	-11.69	5.18	4.84	6.31	4.68	Feb-06
Undesignated Funds	1,478,471	9.03	-10.69	-14.26	-11.46	5.32	5.08	6.63	4.89	Feb-06
Holy Trinity Endowment	581,149	3.55	-11.06	-14.74	-11.83	5.87	5.34	6.34	4.72	Feb-06
Foundation Trustees	751,672	4.59	-10.99	-14.78	-12.01	4.91	4.74	-	4.46	Feb-15
William and Phyllis Walker Fund	156,136	0.95	-10.79	-14.38	-11.94	5.35	5.08	6.44	4.73	Feb-06
Holy Trinity Hertford	639,145	3.90	-10.50	-14.13	-11.41	5.30	5.10	6.48	4.72	Feb-06
Susan & Wallace Murchison	424,293	2.59	-10.65	-14.53	-11.76	5.81	5.39	-	4.76	Mar-14
George Jeffreys Memorial Fund	349,353	2.13	-10.76	-14.84	-11.91	5.63	5.39	6.61	5.00	Feb-08
Price-Noe Memorial Fund	340,992	2.08	-10.69	-14.64	-11.67	5.86	4.99	6.66	4.87	Feb-06
Smithson Fund	335,432	2.05	-10.70	-14.77	-11.92	5.77	5.43	6.68	4.94	Feb-06
St Thomas Ahoskie	382,139	2.33	-10.40	-14.15	-11.72	5.37	5.03	-	4.75	Jan-14
St. Paul's Huber Fund	250,182	1.53	-10.69	-14.40	-11.72	6.16	5.52	-	6.28	Dec-15
St. Paul's of Greenville	1,516,953	9.27	-10.63	-14.29	-11.75	4.40	4.28	6.00	4.31	Dec-06
Ward Fund, Grace Episcopal	275,799	1.68	-10.86	-14.90	-12.01	5.42	4.99	6.25	5.75	Nov-09
St. ThomasBath	438,605	2.68	-10.58	-14.08	-11.25	5.97	5.60	-	5.70	Apr-13
Trinity Epis Lumberton	162,686	0.99	-10.91	-14.89	-12.15	5.47	5.21	-	5.37	Apr-13
Edward Forbes Fund	208,808	1.28	-10.67	-14.47	-11.67	5.35	5.27	6.93	5.01	Feb-06
Graham Building Fund	157,162	0.96	-10.71	-14.46	-11.66	5.53	5.21	6.67	5.10	Feb-06
Trinity Lumberton Endowment	174,896	1.07	-11.50	-15.28	-12.30	5.12	4.87	-	5.35	Apr-13

As of June 30, 2022

Total Composite Performance

	Market Value \$	% of Portfolio	3 Mo (%)	YTD (%)	1 Yr (%)	3 Yrs (%)	5 Yrs (%)	10 Yrs (%)	Inception (%)	Inception Date
St. James the Fisherman	170,022	1.04	-11.09	-14.62	-12.01	5.49	5.52	6.72	5.64	Aug-08
Church of the Servant	209,150	1.28	-10.24	-13.72	-10.44	5.93	5.14	6.43	4.43	Apr-07
Linda & Richard Seale Endowment	384,351	2.35	-10.69	-14.11	-11.59	5.43	4.91	-	5.04	Apr-13
Trinity Center Endowment Fund	69	0.00	-0.09	-0.17	1.20	15.82	11.41	9.77	6.96	Jan-08
Grace Episcopal Church	179,833	1.10	-11.43	-15.17	-12.23	5.36	5.16	6.74	4.70	Oct-06
St. Francis by the Sea	111,453	0.68	-10.24	-13.64	-10.60	6.36	5.71	-	5.84	Apr-13
Sam Williams Fund	104,522	0.64	-10.86	-14.82	-11.85	5.44	5.15	6.85	5.07	Feb-06
Clergy Foreign Travel Fund	130,220	0.80	-11.49	-15.77	-12.62	5.47	5.22	6.80	5.05	Feb-06
L & N Lastinger Fund	78,530	0.48	-11.29	-15.09	-12.19	5.48	5.04	6.54	4.85	Feb-06
Therapeutic Support Fund	88,248	0.54	-11.86	-16.28	-13.23	5.49	5.45	6.95	5.11	Feb-06
Trinity & Beyond	135,205	0.83	-11.32	-15.38	-12.13	5.42	5.30	-	5.30	Sep-13
Holy Trinity Hampstead	54,529	0.33	-10.97	-14.55	-11.63	5.80	4.92	-	5.51	Sep-15
St. Thomas of Windsor	84,533	0.52	-12.16	-16.99	-13.95	6.01	5.61	6.70	4.61	Apr-07
Priest Education Fund	61,745	0.38	-11.55	-15.59	-12.14	6.09	5.66	6.92	5.08	Feb-06
Richard Seale	131,141	0.80	-10.31	-13.79	-11.05	5.88	5.22	-	5.19	Apr-13
RA Williams Fund	53,615	0.33	-11.49	-14.98	-11.06	6.51	5.88	6.89	5.07	Feb-06
St. Thomas of Windsor	69,919	0.43	-11.14	-15.96	-12.92	5.25	4.62	6.40	4.48	Apr-07
St. Luke's/St. Anne's	51,432	0.31	-11.59	-16.06	-11.49	6.69	7.11	7.92	5.69	Feb-06
Helen Mardre Memorial Fund	44,329	0.27	-11.67	-16.84	-13.50	4.92	5.65	7.13	5.30	Feb-06
Nellie Sea	50,296	0.31	-10.45	-13.93	-10.90	7.16	6.54	-	6.02	Apr-13
Willie S. Grimes Fund	39,552	0.24	-12.15	-16.68	-12.63	5.52	6.06	7.86	7.06	Sep-10

Total Composite Performance

As of June 30, 2022

	Market Value \$	% of Portfolio	3 Mo (%)	YTD (%)	1 Yr (%)	3 Yrs (%)	5 Yrs (%)	10 Yrs (%)	Inception (%)	Inception Date
Youth/Young Campus Ministry	28,162	0.17	-13.82	-19.62	-16.02	5.17	6.11	7.47	5.60	Mar-06
Winslow Merrick Fund	27,852	0.17	-11.88	-17.30	-13.84	4.84	5.70	7.78	5.78	Feb-06
Mary N. Smith Fund	27,409	0.17	-12.71	-17.72	-13.79	5.74	6.46	7.79	5.56	Feb-06
TC Bishops Fund	35,808	0.22	-13.02	-17.98	-13.39	5.29	5.74	7.02	5.07	Apr-08
Dr. Robert King Fund	9,187	0.06	-13.71	-20.33	-17.61	4.32	5.41	8.84	5.32	Feb-06
St. Thomas Church of Windsor	21,075	0.13	-11.90	-15.78	-12.43	4.49	5.34	7.34	5.31	Dec-07
Lucille M. Marvin Fund	20,300	0.12	-13.05	-18.38	-14.94	4.70	5.75	7.79	5.65	Feb-06
Bishop Wright Fund	11,936	0.07	-14.27	-20.28	-17.35	5.77	6.79	8.59	6.14	Feb-06
Bishop Strange Fund	8,696	0.05	-11.98	-16.45	-14.14	4.10	4.92	7.32	5.10	Feb-06
Foundation St. Andrews-Morehead	292,996	1.79	-11.11	-14.95	-12.04	5.22	-	-	4.66	Aug-17
John Wood Foreman Fund	539,836	3.30	-10.73	-14.14	-11.32	5.35	-	-	4.07	Sep-18
St. George's Fund	127,666	0.78	-11.45	-14.73	-12.06	5.26	-	-	5.37	Mar-19
St Christophers	176,113	1.08	-10.88	-14.46	-11.70	6.25	-	-	6.12	Jun-19
St. Paul's Beaufort	640,323	3.91	-10.61	-13.89	-11.72	-	-	-	5.03	Nov-20
St Mary's Burgaw	44,974	0.27	-9.75	-13.50	-10.06	-	-	-	-10.06	Jul-21
Foundation Foundation St. Francis B&G FundSt. Francis B&G Fund	43,954	0.27	-9.63	-13.31	-	-	-	-	-12.09	Sep-21
St. Pauls-Cullman	561,577	3.43	-10.86	-13.96	-	-	-	-	-13.60	Oct-21
Trinity Chocowinity	444,567	2.72	-	-	-	-	-	-	0.00	Jun-22

¹Bimbg. U.S. Aggregate: 28.00%, FTSE 3 Month T-Bill: 2.00%, HFRI Fund of Funds Composite Index: 15.00%, MSCI AC World Index (Net): 55.00%,

- IPS Benchmark modified as of 6/30/19

Total Composite Performance

As of June 30, 2022

	Market Value \$	% of Portfolio	3 Mo (%)	YTD (%)	1 Yr (%)	3 Yrs (%)	5 Yrs (%)	10 Yrs (%)
Total Composite	16,371,500	100.00	-10.82	-14.51	-11.70	5.36	5.06	6.45
IPS Allocation ¹			-10.62	-15.08	-12.29	4.03	4.91	5.97
CPI+5%			4.33	8.90	14.51	10.22	9.07	7.72
US Large Cap Core	807,002	4.93						
JPMorgan U.S. Large Cap Core Plus	1,527	0.01	-17.05	-22.52	-12.70	11.71	11.12	13.16
Russell 1000 Index			-16.67	-20.94	-13.04	10.17	11.00	12.82
Hartford Capital Appreciation Fund	4,783	0.03	-16.30	-21.19	-17.12	5.55	8.15	11.77
Russell 1000 Index			-16.67	-20.94	-13.04	10.17	11.00	12.82
Invesco S&P 500 Equal Weight ETF	796,521	4.87	-14.44	-16.74	-9.50	9.57	9.68	12.34
S&P 500 Equal Weighted			-14.36	-16.68	-9.38	9.73	9.87	12.66
iShares TR Core S&P 500 ETF	4,171	0.03	-16.16	-20.00	-10.62	10.60	11.27	12.91
S&P 500 Index			-16.10	-19.96	-10.62	10.60	11.31	12.96
US Large Cap Growth	2,379,169	14.53						
Invesco QQQ Trust	633,713	3.87	-22.54	-29.33	-20.48	15.23	16.12	17.02
NASDAQ 100 Stock Index			-22.30	-29.22	-20.38	15.42	16.37	17.30
Growth Fund of America	629,274	3.84	-21.94	-30.26	-24.93	7.86	10.10	12.92
Russell 1000 Growth Index			-20.92	-28.07	-18.77	12.58	14.29	14.80
Ivy Large Cap Growth Fund	637,667	3.89	-19.52	-26.87	-17.16	11.38	14.95	14.55
Russell 1000 Growth Index			-20.92	-28.07	-18.77	12.58	14.29	14.80
iShares S&P 500 Growth ETF	478,515	2.92	-	-	-	-	-	-
Russell 1000 Growth Index			-	-	-	-	-	-

As of June 30, 2022

	Market Value \$	Total Composite Performance						
		% of Portfolio	3 Mo (%)	YTD (%)	1 Yr (%)	3 Yrs (%)	5 Yrs (%)	10 Yrs (%)
US Large Cap Value	1,439,014	8.79						
Eaton Vance Large Cap Value Fund	4,640	0.03	-11.16	-9.20	-2.59	8.16	9.26	10.58
Russell 1000 Value Index			-12.21	-12.86	-6.82	6.87	7.17	10.50
ClearBridge Large Cap Value Fund	730,586	4.46						
ClearBridge Large Cap Value Fund	730,586	4.46	-12.74	-14.09	-	-	-	-
Russell 1000 Value Index			-12.21	-12.86	-	-	-	-
Putnam Large Cap Value Fund	703,789	4.30						
Putnam Large Cap Value Fund	703,789	4.30	-10.38	-9.98	-	-	-	-
Russell 1000 Value Index			-12.21	-12.86	-	-	-	-
US Mid Cap Core	582,995	3.56						
iShares TR Core S&P MCP ETF	582,995	3.56	-15.42	-19.57	-14.67	6.79	6.97	10.81
S&P MidCap 400 Index			-15.42	-19.54	-14.64	6.87	7.02	10.90
US Mid Cap Growth	643,226	3.93						
Eventide Gilead Fund	621,679	3.80	-20.06	-33.03	-32.52	5.69	11.71	14.72
Russell Midcap Growth Index			-21.07	-31.00	-29.57	4.25	8.88	11.50
Lord Abbett Growth Opportunities	21,547	0.13						
Lord Abbett Growth Opportunities	21,547	0.13	-18.92	-30.98	-30.51	3.52	8.41	10.32
Russell Midcap Growth Index			-21.07	-31.00	-29.57	4.25	8.88	11.50
US Mid Cap Value	698,538	4.27						
JPMorgan Mid Cap Value Fund	698,538	4.27	-12.38	-13.27	-7.35	6.66	6.26	10.33
Russell Midcap Value Index			-14.68	-16.23	-10.00	6.70	6.27	10.62
US SMID Cap Core	735,187	4.49						
Transamerica Small/Mid Cap Value	735,187	4.49	-10.28	-11.04	-6.26	8.06	7.03	10.66
Russell 2500 Value Index			-15.39	-16.66	-13.19	6.19	5.54	9.54

As of June 30, 2022

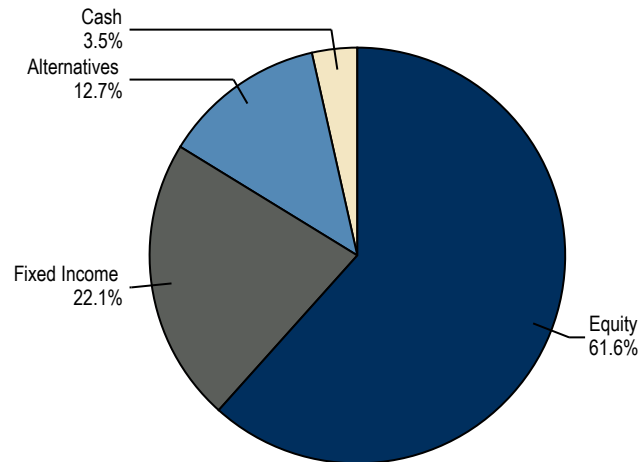
	Market Value \$	Total Composite Performance						
		% of Portfolio	3 Mo (%)	YTD (%)	1 Yr (%)	3 Yrs (%)	5 Yrs (%)	10 Yrs (%)
US Small Cap Core	546,913	3.34						
iShares TR RUSSELL 2000 ETF	538,226	3.29	-17.27	-23.51	-25.37	4.11	5.09	9.33
Russell 2000 Index			-17.20	-23.43	-25.20	4.21	5.17	9.35
iShares TR Core S&P SCP ETF	8,687	0.05	-14.08	-18.93	-16.91	7.26	7.20	11.19
Russell 2000 Index			-17.20	-23.43	-25.20	4.21	5.17	9.35
International	1,967,850	12.02						
Europacific Growth Fund	600	0.00	-14.67	-25.14	-27.75	1.38	2.99	6.20
MSCI EAFE (Net)			-14.51	-19.57	-17.77	1.07	2.20	5.40
iShares TR Core MSCI EAFE	6,474	0.04	-13.53	-19.47	-18.18	1.55	2.36	-
MSCI EAFE (Net)			-14.51	-19.57	-17.77	1.07	2.20	-
iShares TR MSCI EAFE ETF	437,992	2.68	-13.18	-18.78	-17.40	1.33	2.23	5.36
MSCI EAFE (Net)			-14.51	-19.57	-17.77	1.07	2.20	5.40
Ivy International Core Equity Fund	717,436	4.38	-11.12	-18.18	-17.67	2.29	1.27	5.72
MSCI EAFE (Net)			-14.51	-19.57	-17.77	1.07	2.20	5.40
Janus Henderson INTL Opportunities	805,348	4.92	-10.39	-20.24	-21.74	0.11	0.70	5.03
MSCI EAFE (Net)			-14.51	-19.57	-17.77	1.07	2.20	5.40
Emerging Markets	290,484	1.77						
iShares TR MSCI EMG MKT ETF	290,484	1.77	-10.41	-17.20	-25.55	-0.09	1.56	1.64
MSCI Emerging Markets (Net)			-11.45	-17.63	-25.28	0.57	2.18	3.06
US Fixed Income	9,629	0.06						
Janus Henderson Short Duration Inc ETF	9,629	0.06	-0.63	-1.39	-1.48	-	-	-
Blmbg. 1-3 Year Gov/Credit index			-0.63	-3.11	-3.56	-	-	-

	Market Value \$	Total Composite Performance						
		% of Portfolio	3 Mo (%)	YTD (%)	1 Yr (%)	3 Yrs (%)	5 Yrs (%)	10 Yrs (%)
Fixed Income Investment Grade	1,891,242	11.55						
Guggenheim Total Return Bond Fund	1,058,130	6.46	-7.24	-13.27	-12.83	0.27	1.56	3.69
Blmbg. U.S. Aggregate			-4.69	-10.35	-10.29	-0.94	0.88	1.54
Loomis Sayles Investment Grade Bond	833,112	5.09	-5.35	-10.08	-10.04	1.07	2.19	2.93
Blmbg. U.S. Aggregate			-4.69	-10.35	-10.29	-0.94	0.88	1.54
US Fixed Income Other	1,721,371	10.51						
JPMorgan Strategic Income Opportunities	1,721,371	10.51	-0.31	-0.71	-0.64	0.82	1.42	2.33
Blmbg. U.S. Aggregate			-4.69	-10.35	-10.29	-0.94	0.88	1.54
Market Alternatives	2,082,279	12.72						
JPMorgan Hedged Equity Fund	666,401	4.07	-5.33	-9.69	-5.79	7.21	6.93	-
S&P 500 Index			-16.10	-19.96	-10.62	10.60	11.31	-
JPMorgan Hedged Equity Fund 3	23,888	0.15	-10.94	-14.80	-	-	-	-
S&P 500 Index			-16.10	-19.96	-	-	-	-
JPMorgan Hedged Equity Fund 2	1,841	0.01	-9.83	-12.59	-	-	-	-
S&P 500 Index			-16.10	-19.96	-	-	-	-
Columbia Adaptive Risk Allocation	659,204	4.03	-7.12	-11.75	-7.97	4.30	5.45	5.00
60% MSCI ACWI/40% Barclays Global Agg			-11.36	-16.28	-13.43	3.66	4.83	6.04
Grant Park Multi Alternative	730,945	4.46	-1.78	1.84	3.97	6.64	6.68	-
Morningstar Mod Tgt Risk TR USD			-11.34	-15.94	-13.64	3.53	4.91	-
Cash	576,600	3.52						
Cash Account	576,600	3.52						

*Blmbg. U.S. Aggregate: 28.00%, FTSE 3 Month T-Bill: 2.00%, HFRI Fund of Funds Composite Index: 15.00%, MSCI AC World Index (Net): 55.00%,

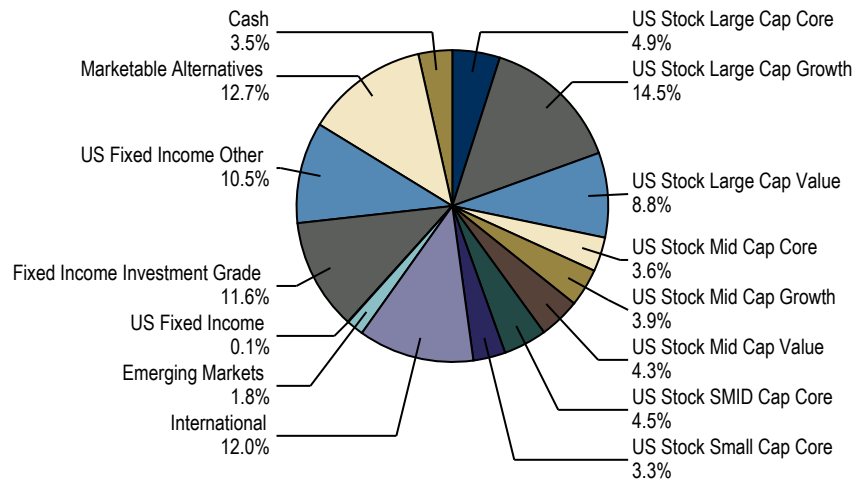
IPS Benchmark modified as of 6/30/19

Asset Class



	Asset Allocation \$	Asset Allocation (%)
Equity	\$10,090,378	61.63
Fixed Income	\$3,622,242	22.13
Alternatives	\$2,082,279	12.72
Cash	\$576,600	3.52
Total	\$16,371,500	100.00

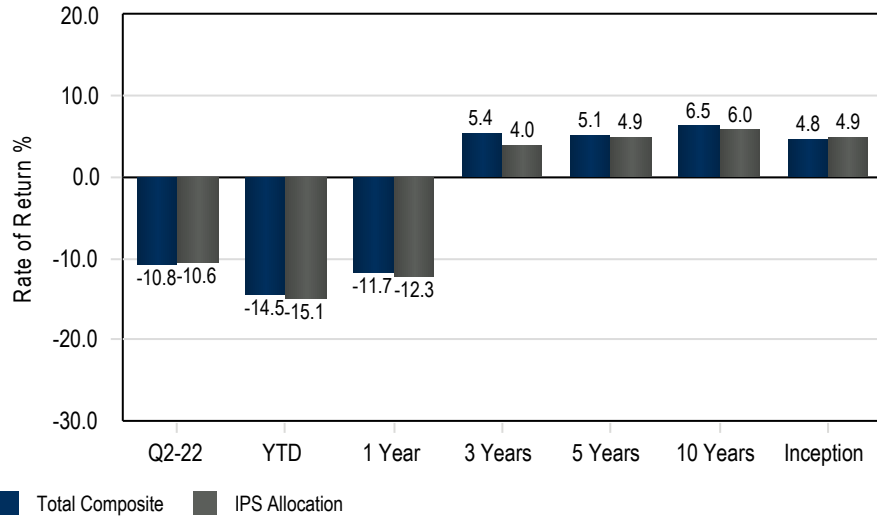
Style



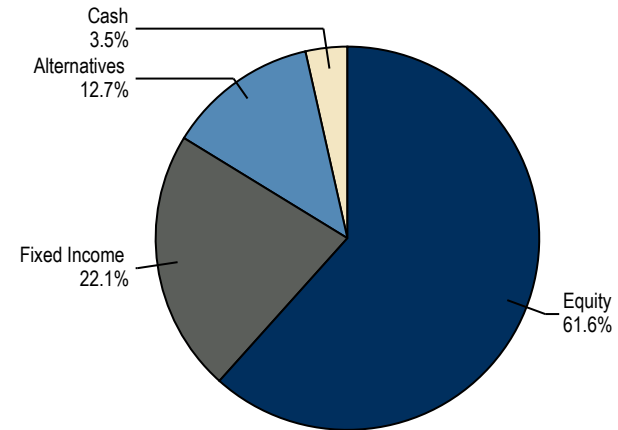
	Asset Allocation \$	Asset Allocation (%)
US Stock Large Cap Core	\$807,002	4.93
US Stock Large Cap Growth	\$2,379,169	14.53
US Stock Large Cap Value	\$1,439,014	8.79
US Stock Mid Cap Core	\$582,995	3.56
US Stock Mid Cap Growth	\$643,226	3.93
US Stock Mid Cap Value	\$698,538	4.27
US Stock SMID Cap Core	\$735,187	4.49
US Stock Small Cap Core	\$546,913	3.34
International	\$1,967,850	12.02
Emerging Markets	\$290,484	1.77
US Fixed Income	\$9,629	0.06
Fixed Income Investment Grade	\$1,891,242	11.55
US Fixed Income Other	\$1,721,371	10.51
Marketable Alternatives	\$2,082,279	12.72
Cash	\$576,600	3.52
Total	\$16,371,500	100.00

Total Composite Performance

Return Summary (%)



Asset Class



Summary of Cash Flows

	Quarter	Year-To-Date
Total Composite		
Beginning Market Value	\$18,198,461	\$19,334,463
Contributions	\$453,044	\$479,016
Distributions	-\$328,296	-\$726,165
Net Flow	\$124,748	-\$247,149
Net Investment Change	-\$1,951,709	-\$2,715,814
Income	\$49,370	\$77,605
Ending Market Value	\$16,371,500	\$16,371,500

IMPORTANT DISCLOSURES

This information is provided for your convenience, but should not be used as a substitute for your account's monthly statements and trade confirmations. Material is provided for informational purposes only and does not constitute a recommendation. It has been gathered in a manner which we believe to be reliable, but accuracy is not guaranteed. It is not intended as tax advice. Past performance does not guarantee future results.

Diversification and strategic asset allocation does not ensure a profit or protect against a loss. No investment strategy can guarantee success. Investments are subject to market risk, including possible loss of principal.

Investing in small and mid-cap stocks are riskier investments which include price volatility, less liquidity and the threat of competition. International investing involves additional risks such as currency fluctuations, differing financial accounting standards and possible political and economic instability. These risks are greater in emerging markets. Alternative investment strategies involve greater risks and are only appropriate for the most sophisticated, knowledgeable and wealthiest of investors. Managed futures involve specific risks that maybe greater than those associated with traditional investments and may be offered only to clients who meet specific suitability requirements, including minimum net worth tests. You should consider the special risks with alternative investments including limited liquidity, tax considerations, incentive fee structures, potentially speculative investment strategies, and different regulatory and reporting requirements. Commodities are generally considered speculative because of the significant potential for investment loss. REITs are financial vehicles that pool investors' capital to purchase or finance real estate. REITs involve risks such as refinancing, economic conditions in the real estate industry, changes in property values and dependency on real estate management.

Alternative investments such as Hedge Funds involve substantial risks that may be greater than those associated with traditional investments and are not suitable for all investors. They may be offered only to clients who meet specific suitability requirements, including minimum-net-worth tests. These risks include, but are not limited to, limited liquidity, tax considerations, incentive fee structures, potentially speculative investment strategies, and different regulatory and reporting requirements. Investors should only invest in hedge funds if they do not require a liquid investment and can bear the risk of substantial losses. There is no assurance that any investment will meet its investment objectives or that substantial losses will be avoided. Investors should carefully review any offering materials or prospectuses prior to investing. A Non marketable security is typically a debt security, that is difficult to buy or sell due to the fact that they are not traded on any normal, major secondary market exchanges. Such securities, if traded in any secondary market, are usually only bought and sold through private transactions or in an over-the-counter (OTC) market. For the holder of a non-marketable security, finding a buyer can be difficult, and some non-marketable securities cannot be resold at all because government regulations prohibit any resale.

Performance: Performance results are annualized for time periods greater than one year and include all cash and cash equivalents, realized and unrealized capital gains and losses, and dividends, interest and income. The investment results depicted herein represent historical performance. As a result of recent market activity, current performance may vary from the figures shown. Please contact your Financial Advisor for up to date performance information.

Indices: Raymond James reserve the right to change the indices at any time. Benchmark indices and blends included in this material are for informational purposes only, are provided solely as a comparison tool and may not reflect the underlying composition and/or investment objective(s) associated with the account(s). In some circumstances, the benchmark index may not be an appropriate benchmark for use with the specific composite portfolio. For instance, an index may not take into consideration certain changes that may have occurred in the portfolio since the inception of the account(s), (e.g., changes from a brokerage to an advisory account or from one advisory program to another, asset class changes, or index changes for individual managers). The volatility of the index used for comparison may be materially different from that of the performance shown. Indices are unmanaged and not available for direct investment. Index returns do not take into account fees or other charges. Such fees and charges would reduce performance. Please see the Benchmark Definitions section of this material for additional information on the indices used for comparison.

Performance Inception Month End: Performance Inception Month End refers to performance calculated from the end of the month in which the accounts became eligible for performance. Calculating performance from the Performance Inception Month End allows for a comparison to be made to appropriate benchmarks. Performance Inception Month End does not necessarily correspond to the account opening date.

Realized/Unrealized Gain/Loss: The gain and loss information is provided for informational purposes only, may not be complete, is not a substitute 1099 form (or any other appropriate tax form), and should not be used for tax planning or preparation. Gain and loss values are estimates and should be independently verified. We are not responsible for any gain and loss information provided by you or another financial institution. You are responsible for ensuring the accuracy of such information.

Projected 12 Month Income: Projected Next 12 Months income includes cash income such as interest and cash dividends, based on current yields and may include income from Raymond James & Associates, Inc. and externally held accounts where data is available. These are projections based on historical data and the actual income may be lower or higher than the projections. Raymond James & Associates, Inc. member New York Stock Exchange/SIPC. Investment advisory services offered through Raymond James & Associates.

Investors should consider the investment objectives, risks, charges and expenses of an investment company carefully before investing. The prospectus contains this and other information and should be read carefully before investing. The prospectus is available from your investment professional.

Index Descriptions

It is not possible to invest directly in an index.

31 Day T-Bills – The average discount rate at which the US government is issuing short term-debt.

BBgBarc Municipal Bond: 1-10 Year Blend - A component of the BBgBarc Capital Municipal Bond Index with municipal bonds in the 1-10 year blend (1-12) maturity range.

BBgBarc 1-5 Government/Credit - BBgBarc 1-5 Year Government/Credit Index: Includes all medium and larger issues of U.S. government, investment-grade corporate, and investment-grade international dollar-denominated bonds that have maturities of between 1 and 5 years and are publicly issued.

BBgBarc 1-5 Year Government - An inclusion of securities within the BBgBarc Government Index that have a maturity range from 1 up to (but not including) 5 years.

BBgBarc 1-5 Year Treasury - The 1-5 year component of the BBgBarc Capital U.S. Treasury Index with securities in the maturity range from 1 year up to (but not including) 5 years.

BBgBarc Credit 1-3 Year - BBgBarc 1-5 Year Credit Index: Includes all medium and larger issues of U.S. government, investment-grade corporate, and investment-grade international dollar denominated bonds that have maturities of between 1 and 3 years and are publicly issued.

BBgBarc U.S. Government/Credit (BCGC) - The Government/Credit component of the U.S. Aggregate. The government portion includes treasuries (public obligations of the U.S. Treasury that have remaining maturities of more than one year) and agencies (publicly issued debt of the U.S. Government agencies, quasi-federal corporations, and corporate or foreign debt guaranteed by the U.S. Government). The credit portion includes publicly issued U.S. corporate and foreign debentures and secured notes that meet specified maturity, liquidity, and quality requirements. Must be a publicly issued, dollar-denominated and non-convertible, U.S. Government or Investment Grade Credit security. Must be rated investment-grade (Baa3/BBB- or higher) by at least two of the following rating agencies: Moody's, S&P, Fitch; regardless of call features, have at least one year to final maturity, and have an outstanding par value amount of at least \$250 million.

BBgBarc Intermediate U.S. Government/Credit (BCIGC) - The intermediate component of the BBgBarc Capital Government/Credit Index with securities in the maturity range from 1 up to (but not including) 10 years.

BBgBarc Global Aggregate - The index is designed to be a broad based measure of the global investment-grade, fixed rate, fixed income corporate markets. The major components of this index are the US Aggregate, Pan-European Aggregate, and the Asian-Pacific Aggregate Indices. The index also includes Eurodollar and Euro-Yen corporate bonds, Canadian government, agency and corporate securities.

BBgBarc Global Aggregate Intermediate - The intermediate component of the BBgBarc Global Aggregate index with securities in the maturity range from 1 up to (but not including) 10 years.

BBgBarc U.S. Government: Intermediate - The intermediate component of the BBgBarc Capital U.S. Government Index with securities in the maturity range from 1 up to (but not including) 10 years.

BBgBarc U.S. Government: Long - The long component of the BBgBarc Capital U.S. Government Index with securities in the maturity range from 10 years or more.

BBgBarc LT Muni - A component of the BBgBarc Capital Municipal Bond Index with municipal bonds with a maturity range greater than 20 years.

BBgBarc Municipal Bond Index - A rules-based, market-value weighted index that is engineered for the long-term tax-exempt bond market. Bonds must be rated investment-grade (Baa3/BBB- or higher) by at least two of the following rating agencies: Moody's, S&P, Fitch. The bonds must be fixed rate, have a dated-date after December 31, 1990, have an outstanding par value of at least \$7million, and be issued as part of a transaction of at least \$75 million. The four main sectors of the index are: general obligation bonds, revenue bonds, insured bonds (including all insured bonds with a Aaa/AAA rating), and prefunded bonds. Remarketed issues, taxable municipal bonds, floating rate bonds, and derivatives, are excluded from the benchmark.

BBgBarc U.S. Treasury - A component of the U.S. Government Index. Must be publicly issued, dollar-denominated and non-convertible, fixed rate (although it may carry a coupon that steps up or changes according to a predetermined schedule) U.S. Treasury security. Must be rated investment-grade (Baa3/BBB- or higher) by at least two of the following rating agencies: Moody's, S&P, Fitch; regardless of call features, have at least one year to final maturity, and have an outstanding par value amount of at least \$250 million.

BBgBarc U.S. Treasury: Intermediate (BCIT) - The intermediate component of the BBgBarc Capital U.S. Treasury Index with securities in the maturity range from 1 year (but not including) 10 years.

BBgBarc U.S. Treasury: Long - The long component of the BBgBarc Capital U.S. Treasury Index with securities in the maturity range from 10 years or more.

BBgBarc U.S. Treasury: U.S. TIPS - Comprised of Inflation-Protection securities issued by the U.S. Treasury. Must be a fixed rate, publicly issued U.S. Treasury Inflation Note that is dollar-denominated and non-convertible. Must be rated investment-grade (Baa3/BBB- or higher) by at least two of the following rating agencies: Moody's, S&P, Fitch; have at least one year to final maturity, and have an outstanding par value amount of at least \$250 million.

BBgBarc High Yield Composite BB - A component of the BBgBarc U.S. Corporate High Yield Bond Index with bonds in the BB or better.

FTSE 1-3 Year U.S. Treasury - Component of the FTSE U.S. Treasury that measures total returns for U.S. Treasuries with a maturity between 1-3 years.

FTSE 3 Month U.S. Treasury Bill - This index measures monthly return equivalents of yield averages that are not marked to market. The Three-Month Treasury Bill Indices consist of the last three three-month Treasury bill issues.

FTSE World Government Bond - FTSE World Government Bond Index (WGBI), includes the most significant and liquid government bond markets globally that carry at least an investment grade rating.

FTSE World Government Bond ex US – Similar to the FTSE World Government Bond Index (WGBI), includes the most significant and liquid government bond markets globally that carry at least an investment grade rating but excludes bonds from the United States.

Consumer Price Index - All Urban Consumers (CPI-U) - As an economic indicator, and as the most widely used measure of inflation, the Consumer Price Index (CPI) is an indicator of the effectiveness of government policy, and as a guide in making economic decisions for business executives, labor leaders, and other private citizens. Published on a monthly basis by the U.S. Bureau of Labor Statistics (BLS), the CPI is a measure of the average change in prices over time of goods and services purchased by households. CPI for All Urban Consumers (CPI-U) encompasses approximately 87 percent of the total U.S. population which includes, in addition to wage earner and clerical worker households, groups such as professional, managerial, and technical workers, the self-employed, short-term workers, the unemployed, and retirees and others not in the labor force.

Dow Jones UBS Commodity - Provides a diversified representation of commodity markets as an asset class. The index is comprised of exchange-traded futures on physical commodities; representing 19 commodities which are weighted for economic significance and market liquidity. To promote diversification, weighting restrictions are placed on individual commodities and commodity groups.

FTSE NAREIT U.S. Real Estate - All REITs - The index is designed to represent a comprehensive performance of publicly traded REITs which covers the commercial real estate space across the US economy, offering exposure to all investment and property sectors. It is not free float adjusted, and constituents are not required to meet minimum size and liquidity criteria.

HFRI Equity Hedge Fund Index - The index is designed to represent strategies which maintain positions both long and short in primarily equity and equity derivative securities. A wide variety of investment processes can be employed to arrive at an investment decision, including both quantitative and fundamental techniques; strategies can be broadly diversified or narrowly focused on specific sectors and can range broadly in terms of levels of net exposure, leverage employed, holding period, concentrations of market capitalizations and valuation ranges of typical portfolios. Equity Hedge managers would typically maintain at least 50% exposure to, and may in some cases be entirely invested in, equities - both long and short.

HFRI (Hedge Fund Research, Inc.) Fund of Funds Composite Index (1) - The index only contains fund of funds, which invest with multiple managers through funds or managed accounts. It is an equalweighted index, which includes over 650 domestic and offshore funds that have at least \$50 Million under management or have been actively trading for at least 12 months. All funds report assets in US Dollar, and Net of All Fees returns which are on a monthly basis.

MSCI ACWI - A free float-adjusted market capitalization index that is designed to measure the equity market performance of both developed and emerging markets. This "All Country World Index" reflects performance across the Americas, Europe & the Middle East, Africa, Asia, and the Pacific.

MSCI EAFE - A free float-adjusted market capitalization index that is designed to measure the equity market performance of developed markets, excluding the U.S. and Canada. As of December 31, 2010 the MSCI EAFE Index consists of 22 developed market country indices: Australia, Austria, Belgium, Denmark, Finland, France, Germany, Greece, Hong Kong, Ireland, Israel, Italy, Japan, the Netherlands, New Zealand, Norway, Portugal, Singapore, Spain, Sweden, Switzerland, and the United Kingdom.

MSCI EAFE Value -Net Dividend - A free float-adjusted market capitalization index that is designed to measure the equity market performance of developed markets, excluding the U.S. and Canada. Value attribute for index construction is defined using: book value to price ratio, 12-months forward earnings to price ratio, and dividend yield. Net total return indices reinvest dividends after the deduction of withholding taxes, using (for international indices) a tax rate applicable to non-resident institutional investors who do not benefit from double taxation treaties.

MSCI EAFE Growth -Net Dividend - A free float-adjusted market capitalization index that is designed to measure the equity market performance of developed markets, excluding the U.S. and Canada. Growth attribute for index construction is defined using: long-term forward earnings per share (EPS) growth rate, short-term forward EPS growth rate, current internal growth rate, long-term historical EPS growth trend, long-term historical sales per share growth trend. Net total return indices reinvest dividends after the deduction of withholding taxes, using (for international indices) a tax rate applicable to non-resident institutional investors who do not benefit from double taxation treaties.

MSCI Emerging Markets - A free float-adjusted market capitalization index that is designed to measure equity market performance of emerging markets. As of December 31, 2010, the MSCI Emerging Markets Index consists of the following 21 emerging market country indices: Brazil, Chile, China, Colombia, Czech Republic, Egypt, Hungary, India, Indonesia, Korea, Malaysia, Mexico, Morocco, Peru, Philippines, Poland, Russia, South Africa, Taiwan, Thailand, and Turkey.

MSCI World - A free float-adjusted market capitalization weighted index that is designed to measure the equity market performance of developed markets. As of December 31, 2010, the MSCI World Index consists of the following 24 developed market country indices: Australia, Austria, Belgium, Canada, Denmark, Finland, France, Germany, Greece, Hong Kong, Ireland, Israel, Italy, Japan, Netherlands, New Zealand, Norway, Portugal, Singapore, Spain, Sweden, Switzerland, the United Kingdom, and the United States.

NCREIF - The index is a quarterly time series composite total rate of return measure of investment performance of a very large pool of individual commercial real estate properties acquired in the private market for investment purposes only. Information on this index is available at ncreif.com.

Russell 1000 - Based on a combination of their market cap and current index membership, this index is comprised of approximately 1,000 of the largest securities from the Russell 3000. Representing approximately 92% of the Russell 3000, the index is created to provide a full and unbiased indicator of the large cap segment.

Russell 1000 Growth - Measures the performance of those Russell 1000 companies with higher price-to-book ratios and higher forecasted growth values.

Russell 1000 Value - Measures the performance of those Russell 1000 companies with lower price-to-book ratios and lower expected growth values.

Russell 2000 - Based on a combination of their market cap and current index membership, this index is comprised of approximately 2,000 of the smaller securities from the Russell 3000. Representing approximately 8% of the Russell 3000, the index is created to provide a full and unbiased indicator of the small cap segment.

Russell 2000 Growth - Measures the performance of those Russell 2000 companies with higher price-to-book ratios and higher forecasted growth values.

Russell 2000 Value - Measures the performance of those Russell 2000 companies with lower price-to-book ratios and lower expected growth values.

Russell 2500 - Based on a combination of their market cap and current index membership, this index is comprised of approximately 2,500 of the smallest securities from the Russell 3000. Measures the performance of the small to mid-cap (smid) segment of the U.S. equity universe.

Russell 2500 Growth - Measures the performance of those Russell 2500 companies with higher price-to-book ratios and higher forecasted growth values.

Russell 2500 Value - Measures the performance of those Russell 2500 companies with lower price-to-book ratios and lower expected growth values.

Russell 3000 - Representing approximately 98% of the investable U.S. equity market, the Russell 3000 index measures the performance of the largest 3,000 U.S. companies.

Russell 3000 Growth - Measures the performance of the broad growth segment of the U.S. equity universe which includes Russell 3000 companies with higher price-to-book ratios and higher forecasted growth values.

Russell 3000 Value - Measures the performance of the broad growth segment of the U.S. equity universe which includes Russell 3000 companies with lower price-to-book ratios and lower forecasted growth values.

Russell Midcap - A subset of the Russell 1000 index, the Russell Midcap index measures the performance of the mid-cap segment of the U.S. equity universe. Based on a combination of their market cap and current index membership, includes approximately 800 of the smallest securities which represents approximately 27% of the total market capitalization of the Russell 1000 companies. The index is created to provide a full and unbiased indicator of the mid-cap segment.

Russell Midcap Growth - Measures the performance of those Russell Mid-cap companies with higher price-to-book ratios and higher forecasted growth values.

Russell Midcap Value - Measures the performance of those Russell Mid-cap companies with lower price-to-book ratios and lower expected growth values.

Standard & Poor's 400 MidCap - Comprised of 400 domestic stocks that are chosen based upon market capitalization, liquidity and industry representation. The medium size US firms range with a market capitalization between \$2 billion to \$10 billion, and are between the S&P 500 Index and the S&P Smallcap 600 Index. It is a market-weighted index, which represents approximately 7% of the aggregate market value of US companies.

Standard & Poor's 500 - Representing approximately 75% of the investable US equity market, the S&P 500 measures changes in stock market conditions based on the average performance of 500 widely held common stocks. It is a market-weighted index calculated on a total return basis with dividend reinvested.

Stark 300 Trader - The Stark 300 index tracks the performance of the top-300 futures and forex traders. The index is calculated monthly using an equity-weighted formula to determine performance.

Index Abbreviations

Bloomberg Barclays – Abbreviated as BBgBarc and then a descriptor. For example BBgBarc US Aggregate TR is the Bloomberg Barclays United States Aggregate Total Return.

Statistics and General Definitions

Alpha – Measures how well a portfolio performed versus its benchmark after factoring in the amount of risk (as measured by beta) taken. Technically, alpha is the difference between the excess return of a portfolio and the excess return of the benchmark multiplied by beta. Excess return is simply the actual return minus the return of the risk-free asset, U.S. Treasury Bill. A positive alpha indicates the portfolio has performed better than the benchmark on a risk-adjusted basis.

Allocation Effect – Attributable to the asset allocation of the portfolio.

Annual Standard Deviation – A measure of variability in returns. The annual standard deviation measures the dispersion of annual returns around the average annualized return.

Annualized Return – A statistical technique whereby returns covering periods greater than one year are converted to cover a one year period.

Attribution – Analytical technique used to evaluate the performance of the portfolio relative to a benchmark. Attribution shows where value was added or subtracted as a result of the investment manager's decisions. The four main attribution effects are: Selection or Manager Effect, Allocation Effect, Currency Effect, and Interaction Effect.

Beta – A coefficient measuring a portfolio's relative volatility with respect to its market. Technically, beta is the covariance of a portfolio's return with the benchmark portfolio's return divided by the variance of the benchmark portfolio's return. Thus, a portfolio with a beta greater than 1.00, indicates the portfolio experienced greater volatility than the benchmark, whereas a portfolio with a beta less than 1.00, indicates the portfolio experienced less volatility than the benchmark.

Commitments – Also called Committed Capital. The amount an investor has agreed to contribute towards the funding of a venture capital fund. May be paid at one time or over a longer period.

Consumer Price Index – Measures the change in consumer prices, as determined by a monthly survey of the U.S. Bureau of Labor Statistics. CPI components include housing costs, food, transportation and electricity.

Correlation – Measures the strength of association between two variables. The value ranges between -1 and +1. The strongest linear relationship is indicated by a correlation of -1 or +1. The weakest linear relationship is indicated by a correlation of 0. Positive correlation means if one variable gets bigger, the other variable tends to get bigger. Negative correlation means that if one variable gets bigger, the other variable tends to get smaller.

Currency Effect – The effect that changes in currency exchange rates over time affect excess performance

Downside Capture Ratio – Measures investment manager's performance in down markets relative to a particular benchmark. A down-market is defined as those periods (months or quarters) in which market return is less than 0%.

Duration – A measure of the price sensitivity of a bond or bond portfolio to a change in interest rates.

Information Ratio – Describes the risk / reward trade-off of alpha and tracking error. Because the formula for calculating information ratio is Alpha divided by Tracking Error, the larger the information ratio, the more attractive the portfolio is from an overall risk return profile.

Interaction Effect – The portion that is not accounted for by the Selection/Manager Effect or Allocation effects.

R2 – Also called the coefficient of determination. On the detail page, R2 measures how much of the variation in the investment manager's returns can be explained by movements in the market (benchmark).

Sharpe Ratio – A risk-adjusted measure calculated using standard deviation and excess return to determine reward per unit of risk. The higher the Sharpe ratio, the better the manager's historical risk-adjusted performance.

Selection or Manager Effect – attributable to the investment manager's stock selection decisions

Tracking Error – A measure that describes the volatility of the expected excess return (alpha) achieved through active management. Since excess return can only be achieved through a portfolio that actively differs from the benchmark, the level of tracking error is indicative of how different the portfolio will perform relative to any given benchmark.

Upside Capture Ratio – Measures investment manager's performance in up markets relative to a particular benchmark. An up-market is defined as those periods (months or quarters) in which market return is greater than 0%.

RAYMOND JAMES®

©2022 Raymond James & Associates, Inc., member New York Stock Exchange/SIPC
Raymond James® is a registered trademark of Raymond James Financial, Inc.